



REGIONAL SPECIALISED METEOROLOGICAL CENTRE-TROPICAL CYCLONES, NEW DELHI
TROPICAL WEATHER OUTLOOK

DEMS-RSMC TROPICAL CYCLONES NEW DELHI DATED 02.08.2021

TROPICAL WEATHER OUTLOOK FOR NORTH INDIAN OCEAN (THE BAY OF BENGAL AND ARABIAN SEA) VALID FOR NEXT 120 HOURS ISSUED AT 0600 UTC OF 02.08.2021 BASED ON 0300 UTC OF 02.08.2021.

BAY OF BENGAL:

YESTERDAY'S, WELL MARKED LOW PRESSURE AREA OVER SOUTHEAST UTTAR PRADESH & NEIGHBOURHOOD NOW LIES OVER SOUTHWEST UTTAR PRADESH & ADJOINING NORTHWEST MADHYA PRADESH AT 0300UTC OF TODAY, THE 2nd AUGUST 2021. IT IS LIKELY TO MOVE WESTWARDS GRADUALLY DURING NEXT 3 DAYS.

YESTERDAY'S, LOW PRESSURE AREA OVER SOUTHERN PARTS OF HARYANA & NEIGHBOURHOOD HAS BECOME LESS MARKED OVER SAME REGION AT 0000UTC OF TODAY, THE 2ND AUGUST 2021.

CONVECTION ASSOCIATED WITH THE ABOVE WELL MARKED LOW PRESSURE AREA OVER SOUTHWEST UTTAR PRADESH & ADJOINING NORTHWEST MADHYA PRADESH CENTERED WITHIN HALF A DEGREE OF 25.5N AND 79.0E OVERLAND. ASSOCIATED BROKEN LOW AND MEDIUM CLOUDS WITH EMBEDDED INTENSE TO VERY INTENSE CONVECTION LAY OVER SOUTHWEST UTTAR PRADESH, WEST MADHYA PRADESH AND EAST RAJASTHAN. MINIMUM CLOUD TOP TEMPERATURE (CTT) IS MINUS 85 °C.

BROKEN LOW AND MEDIUM CLOUDS WITH EMBEDDED INTENSE TO VERY INTENSE CONVECTION LAY OVER NORTH BAY OF BENGAL, EASTCENTRAL BAY OF BENGAL AND ARAKAN COAST. SCATTERED LOW AND MEDIUM CLOUDS WITH EMBEDDED MODERATE TO INTENSE CONVECTION LAY OVER SOUTH BAY OF BENGAL, ANDAMAN SEA AND GULF OF MARTABAN.

PROBABILITY OF CYCLOGENESIS (FORMATION OF DEPRESSION) DURING NEXT 120 HRS):

24 HOURS	24-48 HOURS	48-72 HOURS	72-96 HOURS	96-120 HOURS
NIL	NIL	NIL	NIL	NIL

ARABIAN SEA:

NO SIGNIFICANT CLOUDS OVER THE REGION.

PROBABILITY OF CYCLOGENESIS (FORMATION OF DEPRESSION) DURING NEXT 120 HRS):

24 HOURS	24-48 HOURS	48-72 HOURS	72-96 HOURS	96-120 HOURS
NIL	NIL	NIL	NIL	NIL

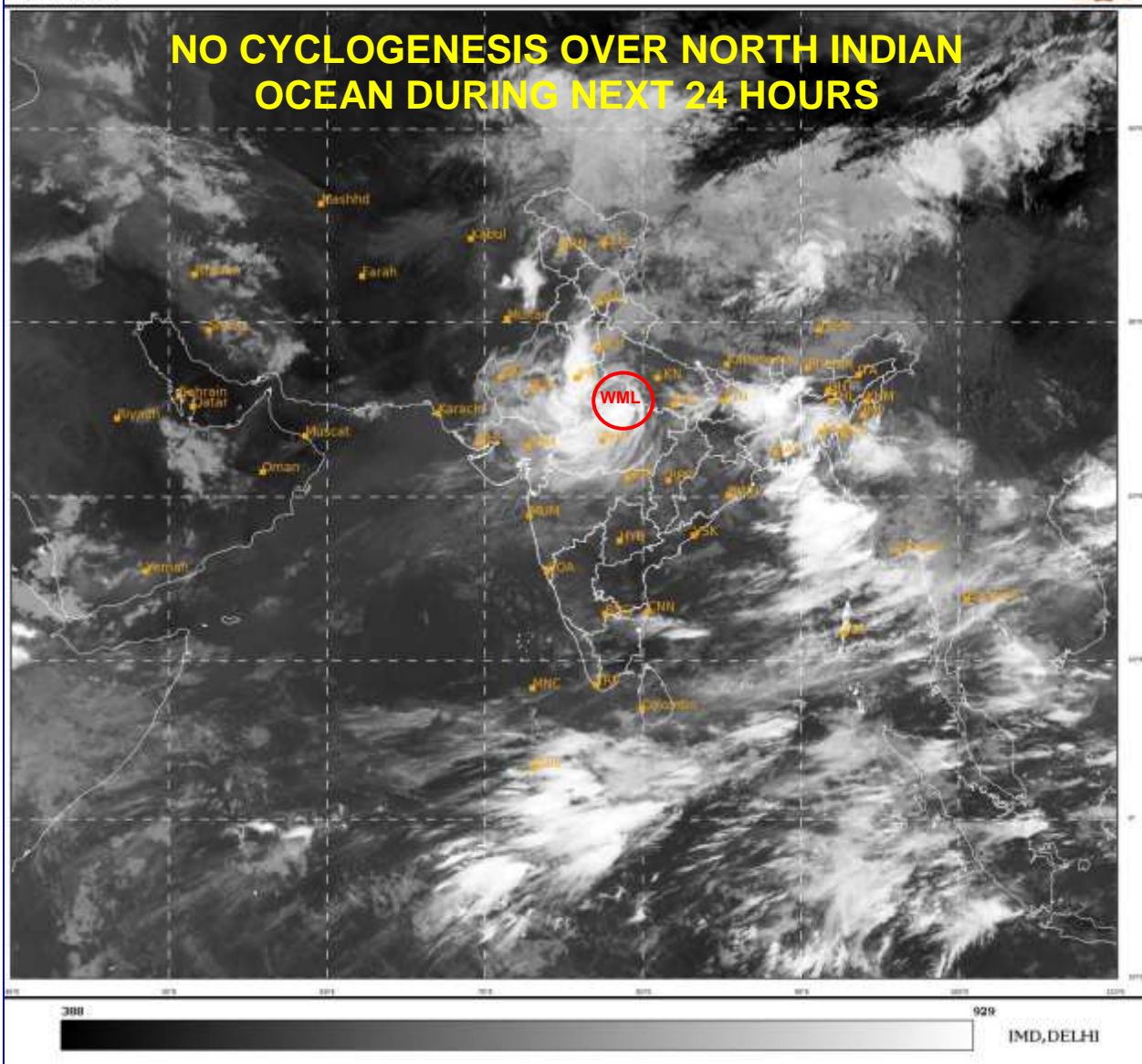
REMARKS: NIL

SAT : INSAT-3D IMG
IMG_TIR1 10.8 um
LIC Mercator

02-08-2021/(0300 to 0326) GMT
02-08-2021/(0830 to 0856) IST



NO CYCLOGENESIS OVER NORTH INDIAN OCEAN DURING NEXT 24 HOURS



- WML STANDS FOR WELL MARKED LOW PRESSURE AREA
- L STANDS FOR LOW PRESSURE AREA